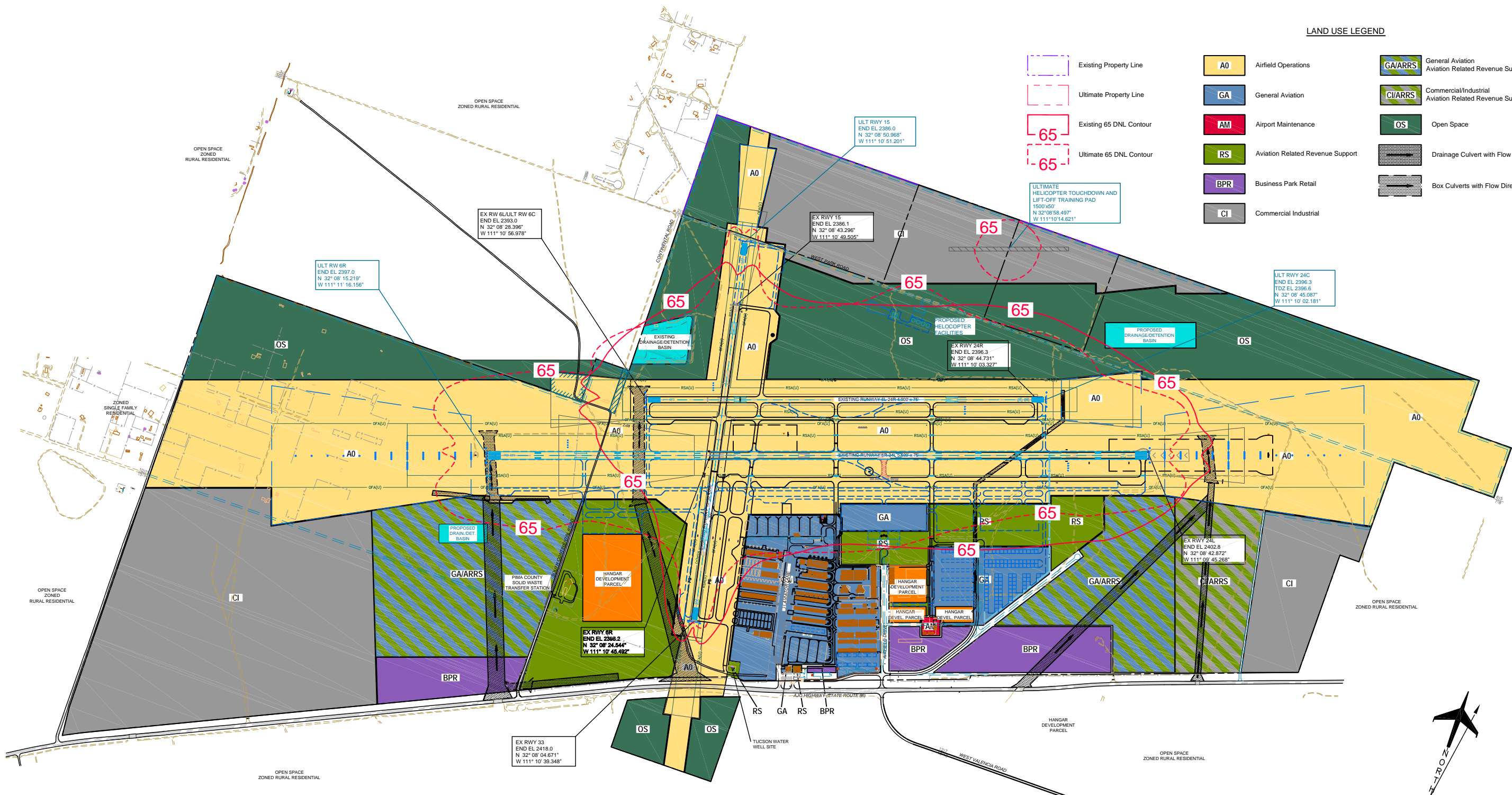


LAND USE LEGEND

- A0 Airfield Operations
- GA General Aviation
- AM Airport Maintenance
- RS Aviation Related Revenue Support
- BPR Business Park Retail
- CI Commercial Industrial
- GA/ARRS General Aviation Aviation Related Revenue Support
- CI/ARRS Commercial/Industrial Aviation Related Revenue Support
- OS Open Space
- Drainage Culvert with Flow Direction
- Box Culverts with Flow Direction



Magnetic Declination
10° 47' East (June 2008)
Annual Rate of Change
00° 06' West (June 2008)



RYAN AIRFIELD
AIRPORT LAND USE DRAWING
Tucson, Arizona

DRAFT

PLANNED BY:	Eric S. Pfeiffer
DETAILED BY:	Diana L. Hopkins
APPROVED BY:	James M. Harris

October 15, 2009 SHEET 18 OF 18

No.	REVISIONS	BY	DATE
1	UPDATED AIRPORT MASTER PLAN	K.L.W. M.F.J.	12/07/00
2	UPDATED AIRPORT MASTER PLAN	R.A.L. S.G.B.	02/29/00
3	UPDATED FOR REVALIDATION	M.E.S. M.F.J.	10/29/96
4	REVISED/UPDATED ALP (FAA/ADOT APPROVAL)	W.E.H. J.M.H.	08/02/96

THE PREPARATION OF THESE DOCUMENTS WAS FINANCED IN PART THROUGH A PLANNING GRANT FROM THE FEDERAL AVIATION ADMINISTRATION AS PROVIDED UNDER SECTION 505 OF THE AIRPORT AND AIRWAY IMPROVEMENT ACT OF 1982, AS AMENDED. THE CONTENTS DO NOT NECESSARILY REFLECT THE OFFICIAL VIEWS OR POLICY OF THE FAA. ACCEPTANCE OF THESE DOCUMENTS BY THE FAA DOES NOT IN ANY WAY CONSTITUTE A COMMITMENT ON THE PART OF THE UNITED STATES TO PARTICIPATE IN ANY DEVELOPMENT DEPICTED HEREIN NOR DOES IT INDICATE THAT THE PROPOSED DEVELOPMENT IS ENVIRONMENTALLY ACCEPTABLE IN ACCORDANCE WITH APPROPRIATE PUBLIC LAWS.

Coffman Associates \\NASM\CAD Files\CAD\Projects\Ryan Airfield\Map\Map.dwg Printed Date: 10-14-09 09:24:18 AM dhp@cs